

Inland Northwest Region COVID-19 PCR (Coronavirus) Specimens

Testing should follow MHS testing recommendations posted on Point MultiCare.

ALL SPECIMENS: Keep at 2-8°C after collection. Maintain proper infection control and appropriate PPE. Label with patient full name, DOB, MRN (may use Epic patient label), date and time of collection, and specimen source.

PPE: Mask, eye protection, gloves, and gown.

NOTE: There are **2 orders** available in EPIC for COVID 19 PCR testing. **87798K (COVIDM) is in-house (currently at TG, GSH, DH, and VH).** **87798I (COVID) routes to UW.** The name of each EAP includes routing based on a complex number of factors, including TAT, capacity and test volumes, reagent availability, collection kits, cost and revenue considerations. This explanation is provided to address routing that may seem counterintuitive.

87798K -- COVID 19 PCR (MultiCare Laboratories)

This order should be used for:

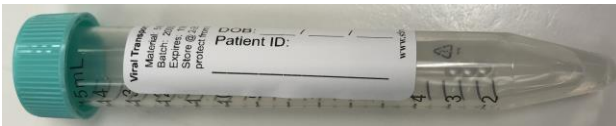
- Most Inpatients and Higher Acuity ED patients
- MHS Staff
- Uninsured Patients
- Ambulatory Pre-Surgical and any Pre-Surgical screening needed <48 hours before surgery

SUPPLIES (Available from Laboratory)

- NP Nasopharyngeal Collection
 - S2 Spokane Viral Media OR
 - M5 Viral Transport Media (use only if testing in combination with other viral testing)
- FloQ Swab
- BAL or Sputum: Sterile screw-top container

SPECIMEN COLLECTION

- **Nasopharyngeal swab in S2:** Collect 1 NP swab (FloQ) in S2 tube. Tightly seal to prevent leaking.
Nasopharyngeal swab: Gently insert mini-tipped flocced nasopharyngeal swab (swab on flexible plastic shaft) through nostril and into nasopharynx, reaching posterior nasopharynx. Leave swab in place 2-3 seconds, then rotate completely around for 10-15 seconds. Remove swab and repeat the same process in the other nostril with the same swab.



- **Sputum:** obtain specimen from deep cough (usually in AM), induction or intubation; *do not send saliva.* Collect in sterile specimen container. Ensure tightly capped.
- **BAL (Bronchoalveolar Lavage):** Collect in sterile specimen container. Ensure tightly capped.
- **Note:** Use this order, Sputum and BAL specimens will be reordered in Lab and sent to UW

87798I -- COVID 19 PCR (UW Laboratory)

This order should be used for:

- Most Ambulatory patients and Lower Acuity ED patients
- First Responders
- Inpatient Pre-Surgical case screening – at least 48 hours prior to surgery

MultiCare Health System

INW COVID19 PCR Specimen Collection Instructions 062220 v12.0

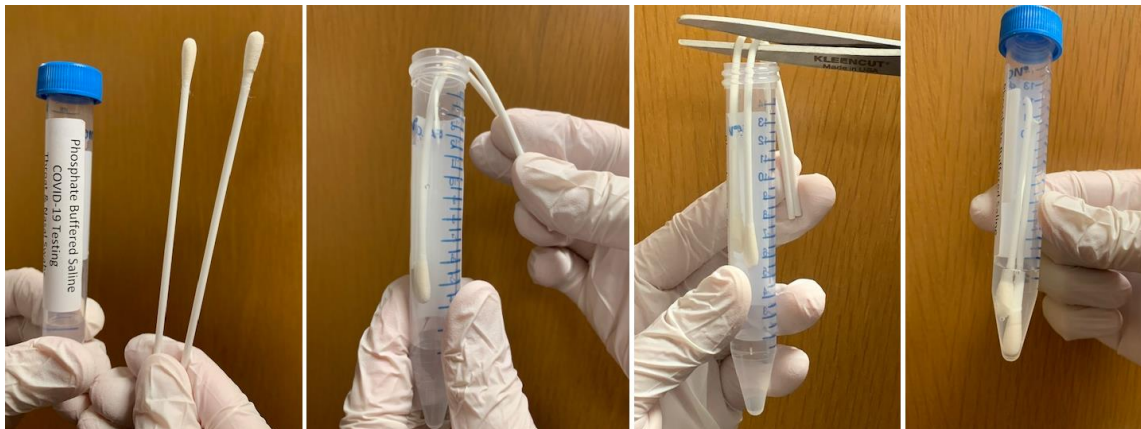
SUPPLIES (Available from Laboratory)

- Combo Nasal/Throat collections
 - PBS (Phosphate Buffered Saline) tube (2-3 mL) (blue top/white label)
 - Dry sterile polyester fiber-tipped swabs, plastic shafts (Nasal + OP/throat)
- Midturbinate Nasal collection
 - Saline tube (blue top/yellow label)
 - Single polyester swab

SPECIMEN COLLECTION

- **Combined Nasal (mid-turbinate) and Throat (Oropharyngeal) Swabs (both) in single PBS (Phosphate Buffered Saline, Blue top/White label) tube**
 - Nasal (mid-turbinate) swab: *Tilt patient's head back 70 degrees. Insert swab less than one inch into nostril, until resistance is met at turbinates. Rotate swab several times against nasal wall and repeat in other nostril using same swab. Place swab in viral transport media or sterile saline.*
 - Throat swab: *(oropharyngeal/OP) Insert second swab into mouth, swab posterior pharynx and tonsillar areas. Avoid tongue. Place in same media as nasal swab.*
 - Insert swabs partially into container and bend over edge container without spilling. Trim swab shafts with disinfected scissors (remember to sanitize thoroughly when completed) short enough to fit completely within the container without pressing on the cap and so lid can be tightened.

Phosphate Buffered Saline
COVID-19 Testing
Throat & Nasal Swabs
Exp: 12/31/2020



- **Midturbinate Nasal swab in saline tube (Blue top/Yellow label)**

- Midturbinate Nasal swab: *Tilt patient's head back 70 degrees. Insert swab less than one inch into nostril, until resistance is met at turbinates. Rotate swab several times against nasal wall and repeat in other nostril using same swab. Place swab in viral transport media or sterile saline.*

Saline: COVID-19 Testing
Nasal Swab / Midturbinate
Diasorin/TG or UW only
Exp: 12/31/2020



SPECIMEN TRANSPORT AND STORAGE

- Place specimen in a single biohazard specimen bag. Do not combine with other specimens.
- *Ensure bag is well-sealed; moisture in bag will result in specimen rejection.* Leaking samples will not be processed.
- Label bag with Epic patient label and mark "Possible COVID-19".
- Specimens must be refrigerated or on icepack within 30 minutes after collection and during storage/transport.
- Transport to laboratory immediately (must be at 2-8°C if transport time >30 minutes).
- Pneumatic tube cannot be used for respiratory specs from suspected COVID patients, including COVID test.

SPECIMEN PROCESSING (IN LABORATORY)

- Specimens in bag must be maintained at 2-8°C or on icepack within 30 minutes after collection.

RESULTS AND REPORTING

- Test results will post immediately as resulted to Epic. Positive results are reported to Public Health Jurisdictions.

EXPECTED TURNAROUND TIME FROM COLLECTION: 12-48 hours after collection

Please note that capacity, volume, and availability of supplies and reagents change daily. Laboratory will adjust routing of specimens to optimize turnaround time.

(Information from: CDC Interim Guidelines for Collecting, Handling, and Testing Clinical Specimens from Persons Under Investigation (PUIs) for Coronavirus Disease 2019 (COVID-19) February 14, 2020)

Associated Appendix: Specimen Collection Graphic